



1

Policies in place?

?

- ▶ Do you have a clear policy about internationalization of curriculum at your institution?
- ▶ Do over 50% of faculty know about this policy?
- ▶ Did you have such a policy in place 2 years ago?

?

2





<https://william-erasmus.com/>

5

WILLIAM



[William-erasmus.com](https://william-erasmus.com/)

Welcome to **I**srael!

Learning & **L**eading

Internationalization at Home

Assistance & **M**anagement tool

6

Project Rationale

With increasing **global interconnected technological advancements**, the jobs of tomorrow can not be predicted....



Yet, we can predict the need for:

- **English fluency**
- **Cross cultural skills**
- **Transversal skills**

e.g.

- critical and innovative thinking,
- interpersonal skills,
- global citizenship,
- media and Information literacy,

7

Students
who study
abroad



def-i-ni-tion n. 1.
The teacher gave de
of the new words.
of an image (pict

Internationalization at
Home:
Strategy to ensure all
students reap the
benefits of an
international education

8



Defining Internationalization at Home (IaH)

"THE **PURPOSEFUL** INTEGRATION OF INTERNATIONAL AND INTERCULTURAL DIMENSIONS INTO THE **FORMAL** AND **INFORMAL CURRICULUM** FOR **ALL** STUDENTS WITHIN DOMESTIC LEARNING ENVIRONMENTS."

(Beelen & Jones, 2015)

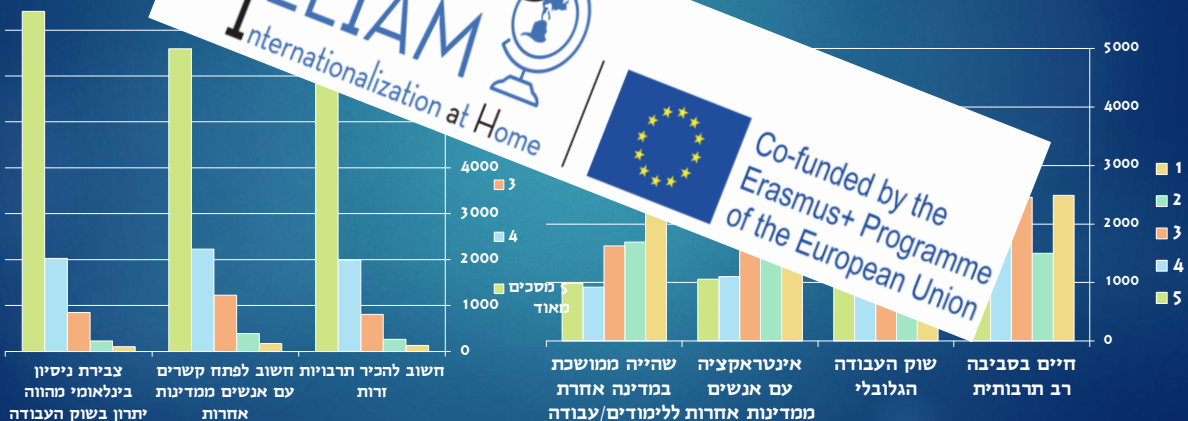
9

Survey: Perceptions of students about Internationalization (n=15,000)



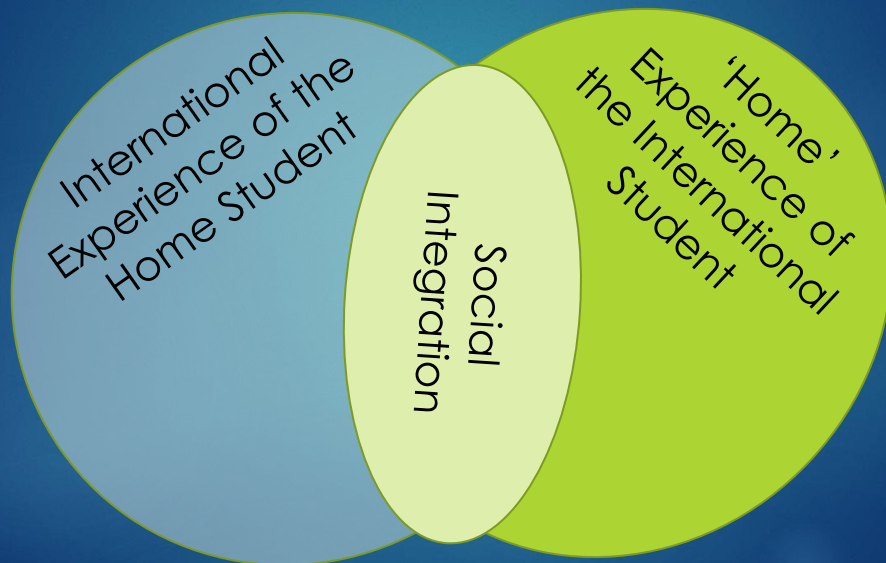
To what extent you agree with the following statements :

To what extent do your studies provide you with the relevant skills, in the following areas?



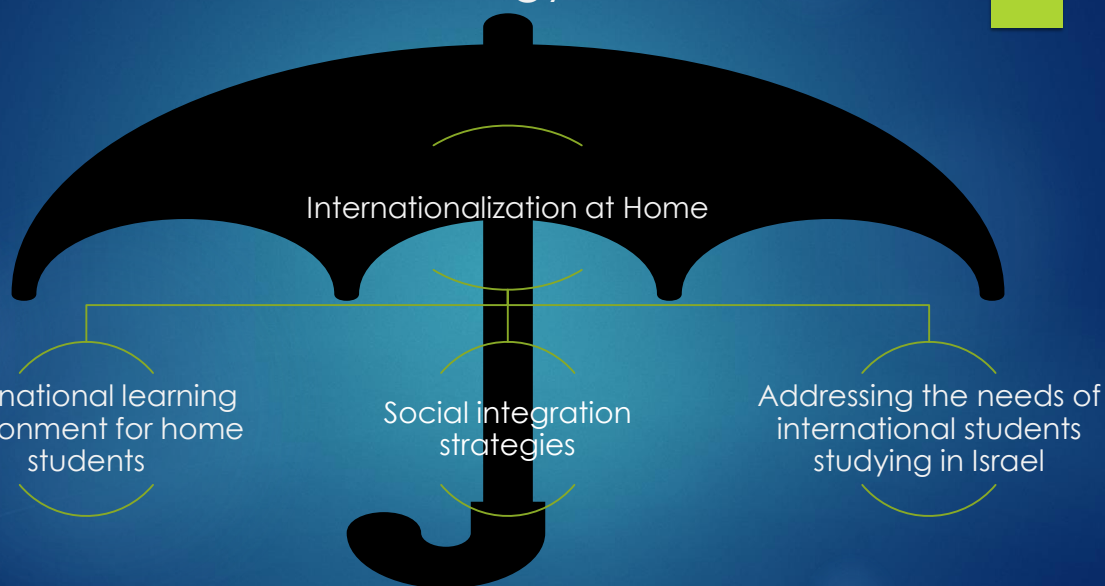
10

WILLIAM strategy for IaH

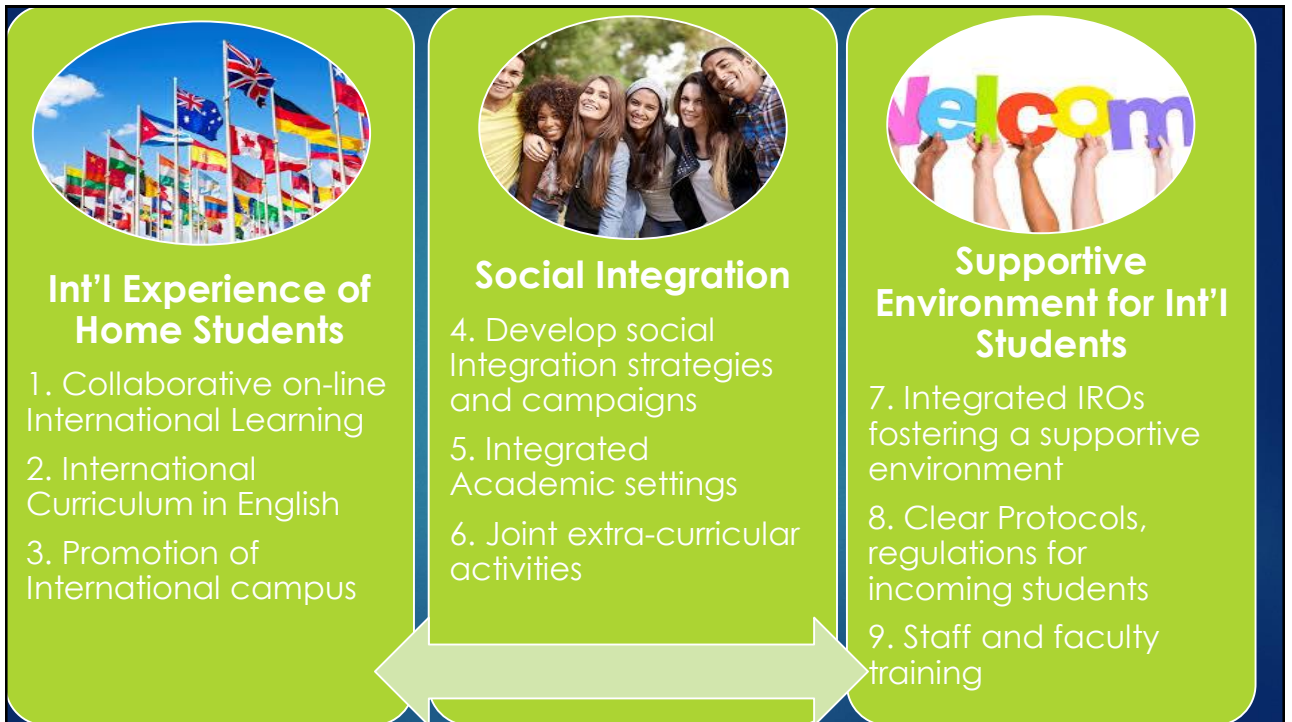


11

WILLIAM strategy for IaH



12



13



14

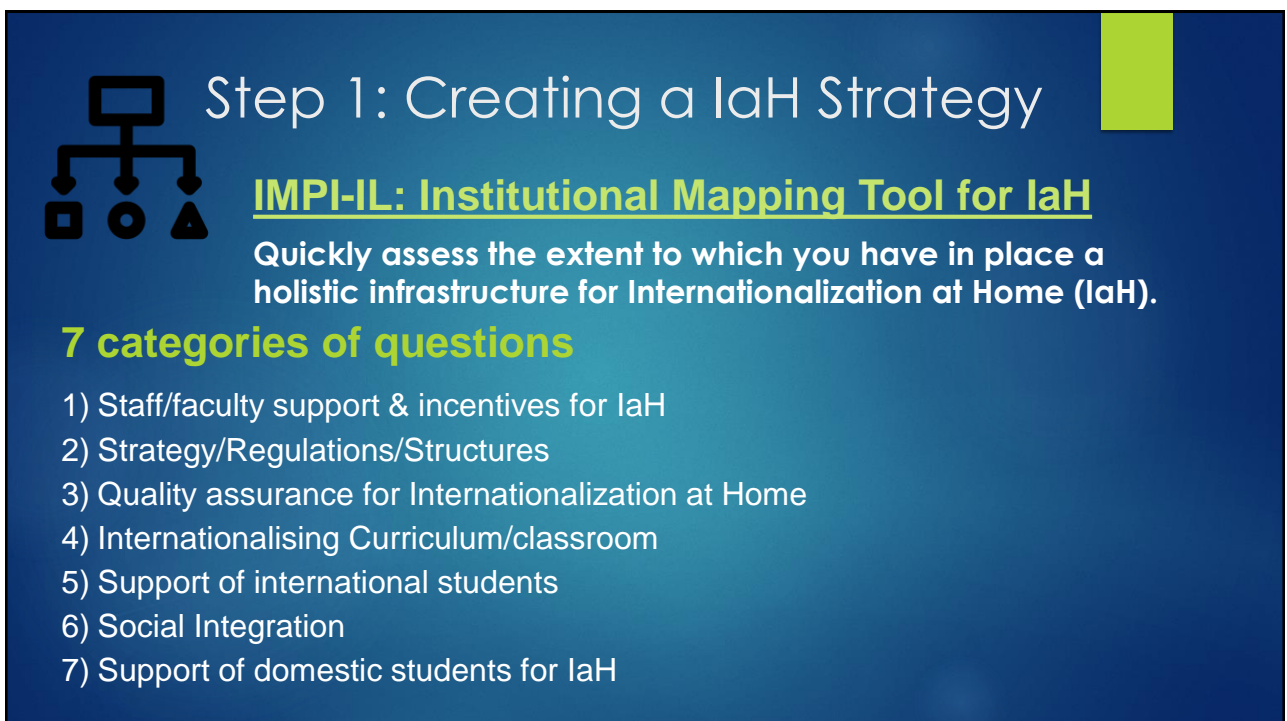


WILLIAM laH Toolkit

....based on the experience of **diverse** Israeli partner institutions in WILLIAM

Logos of partner institutions include: The Hebrew University of Jerusalem, The College of Management Academic Studies, Tel-Hai College, GORDON College of Education, KINNERET College on the Sea of Galilee, and JERUSALEM COLLEGE OF TECHNOLOGY.

15



Step 1: Creating a laH Strategy

IMPI-IL: Institutional Mapping Tool for laH

Quickly assess the extent to which you have in place a holistic infrastructure for Internationalization at Home (laH).

7 categories of questions

- 1) Staff/faculty support & incentives for laH
- 2) Strategy/Regulations/Structures
- 3) Quality assurance for Internationalization at Home
- 4) Internationalising Curriculum/classroom
- 5) Support of international students
- 6) Social Integration
- 7) Support of domestic students for laH

16



Step 1: Creating a IaH Strategy

Faculty Survey for Internationalization

Note: WILLIAM faculty survey integrates some questions from the CHE faculty survey

4 categories of questions:

- 1) General information/departmental affiliation
- 2) Perceived Value in Internationalization Agenda
- 3) International Experience
- 4) Motivation/ability to teach in English

17



Step 2: Decide where you want to invest, browse best practices

- ▶ Protocols/Guidelines for Incoming International Students
- ▶ Safety and Security for International Students
- ▶ Social Integration
- ▶ Internationalization of the Curriculum
- ▶ Collaborative On Line International Learning (COIL)
- ▶ Administrative training for IaH
- ▶ Marketing for Internationalization
- ▶ Links to articles for IaH
- ▶ Links to websites with resources for IaH



18



Internationalization at Home: Best Practices from EU and Israeli Partners in WILLIAM

March 17, 2020
Ben Gurion University

19

Be in touch:

- ▶ Email Us: William@colman.ac.il
- ▶ Visit our website:
www.Erasmus-William.com
- ▶ Register for Newsletter on the website
- ▶ Twitter:
https://twitter.com/William_IaH



Israeli Partners

College of Management (Coord.)
Ben Gurion University
Gordon College
Tel Hai College
Hebrew University
Jerusalem College of Technology
Kinneret College

EU partners

Masaryk University
Management Center Innsbruck
Global Impact Institute
Juraj Dobrila University of Pula
Erasmus Student Network

20